



## SECTION 9. JURISDICTIONAL ANNEXES

### 9.7 City of Meadows Place

This section presents the jurisdictional annex for the City of Meadows Place that provides resources and information to assist public and private sectors to reduce losses from future hazard events. This annex is not guidance of what to do when a disaster occurs. Rather, this annex concentrates on actions to reduce or eliminate damage to property and people that can be implemented prior to a disaster. Information presented includes a general overview of the municipality, the City of Meadows Place representatives who participated in the planning process, an assessment of the City of Meadows Place’s risk and vulnerability, the different capabilities used in the City of Meadows Place, and an action plan that will be implemented to achieve a more resilient community.

#### 9.7.1 Hazard Mitigation Planning Team

The City of Meadows Place identified primary and alternate points of contact and developed this 2023 Hazard Mitigation Plan (HMP) over the course of several months with input from many City of Meadows Place departments, including the Assistant Chief of Police. The Chief of Police represented the community on the Fort Bend County HMP Planning Partnership and supported the local planning process requirements by securing input from persons with specific knowledge to enhance the plan. All departments were asked to contribute to the annex development through reviewing and contributing to the capability assessment, reporting on the status of previously identified actions, and participating in action identification and prioritization.

The following table summarizes municipal officials who participated in the development of the annex and in what capacity. Additional documentation on the municipality’s planning process through Planning Partnership meetings is included in Volume 1, Section 2 (Planning Process) and Appendix C (Meeting Documentation).

**Table 9.7-1. Hazard Mitigation Planning Team**

Primary Point of Contact		Alternate Point of Contact	
Name/Title:	Gary Stewart Chief of Police	Name/Title:	Jack Ashton Assistant Chief of Police
Address:	1 Troyan Dr Meadows Place, Tx 77477	Address:	1 Troyan Dr. Meadows Place, Tx 77477
Phone Number:	281-983-2900	Phone Number:	281-983-2900
Email:	<a href="mailto:stewart@cityofmeadowsplace.org">stewart@cityofmeadowsplace.org</a>	Email:	<a href="mailto:ashton@cityofmeadowsplace.org">ashton@cityofmeadowsplace.org</a>
<b>NFIP Floodplain Administrator</b>			
Name/Title:	Sean Eglinton/Assistant County Engineer*		
Address:	307 Fort St, Richmond, TX 77469		
Phone Number:	281-633-7513		
Email:	<a href="mailto:sean.eglinton@fortbendcountytexas.gov">sean.eglinton@fortbendcountytexas.gov</a>		
<b>Additional Contributors:</b>			
Name/Title:	Gary Stewart, Chief of Police/EMC		
Method of Participation:	Attended meetings. Provided status update on previous actions, capabilities, NFIP administration		
Name/Title:	Jack Ashton, Asst. Chief, Meadows Place PD		
Method of Participation:	Attended meetings. Provided information on building permits		
Name/Title:	Rod Hainey		
Method of Participation:	Attended meetings		
Name/Title:	Charle Jessup		
Method of Participation:	Provided key input		

\*Information Obtained from <https://www.texasflood.org/flood-basics/fpa.html>



### 9.7.2 Municipal Profile

The City of Meadows Place is along the northeast edge of Fort Bend County and is bordered by the City of Sugar Land to the west, Stafford to the south, and Houston to the northeast in Harris County. The City is located between West Belfort Avenue, U.S. Route 59/I-69, Dairy Ashford Road, and West Airport Boulevard. The City of Meadows Place has a total area of 0.93 square miles, all of which are land.

According to the American Community Survey, the 2021 population for the City of Meadows Place was 4,755. Data from the 2021 ACS indicates that 2.8 percent of the population is 5 years of age or younger, and 22.4 percent is 65 years of age or older. Communities must deploy a support system that enables all populations to safely reach shelters or to quickly evacuate a hazard area.

### 9.7.3 Jurisdictional Capability Assessment and Integration

The City of Meadows Place performed an inventory and analysis of existing capabilities, plans, programs, and policies that enhance its ability to implement mitigation strategies. Volume 1, Section 5 (Capability Assessment) describes the components included in the capability assessment and their significance for hazard mitigation planning. The jurisdictional assessment includes the following analyses:

- An assessment of legal and regulatory capabilities
- Development and permitting capabilities
- An assessment of administrative and technical capabilities
- An assessment of fiscal capabilities
- An assessment of education and outreach capabilities
- Classification under various community mitigation programs
- The community’s adaptive capacity to withstand hazard events

For a community to succeed in reducing long-term risk, hazard mitigation must be integrated into the day-to-day local government operations. As part of the hazard mitigation analysis, planning/policy documents were reviewed, and each jurisdiction was surveyed to obtain a better understanding of their progress toward plan integration. The updated mitigation strategy provided an opportunity for the City of Meadows Place to identify opportunities for integration of mitigation concepts that can be incorporated into municipal procedures.

#### **Planning, Legal, and Regulatory Capability and Integration**

The table below summarizes the regulatory tools that are available to the City of Meadows Place. The comment field provides information as to how the capability integrates hazard mitigation and risk reduction.

**Table 9.7-2. Planning, Legal, and Regulatory Capability and Integration**

	Jurisdiction has this? (Yes/No)	Code Citation and Date (code chapter, name of plan, date of plan)	Authority (local, county, state, federal)	Individual / Department / Agency Responsible
<b>Codes, Ordinances, &amp; Regulations</b>				
<b>Building Code</b>	Yes	International Building Code – Ordinance 2018-24	Local	City Council
<i>How does this reduce risk?</i> The City of Meadows Place adopted the 2015 International Building Code and Fire Code.				
<b>Zoning/Land Use Code</b>	Yes	Chapter 153 – Planning and Zoning	Local	Planning and Zoning Commission
<i>How does this reduce risk?</i>				



	Jurisdiction has this? (Yes/No)	Code Citation and Date (code chapter, name of plan, date of plan)	Authority (local, county, state, federal)	Individual / Department / Agency Responsible
The Ordinance is utilized for promoting and protecting the health, safety, morals, and general welfare of the residents, citizens, and inhabitants of the City and for the general welfare of the community. Additionally, the Ordinance is further adopted in order to regulate the use of land within the City so as to promote orderly and healthful development, good government, peace and order of the City, and the trade and commerce.				
<b>Subdivision Ordinance</b>	Yes	Chapter 152 – Subdivision Regulations	Local	Planning Commission
<i>How does this reduce risk?</i> Subdivision regulations provide orderly urban development through land subdivision and assemblage to assure the best possible community environment in accordance with the City Comprehensive Plan, and to provide adequate municipal services and safe streets, and to protect and promote the public health, safety, and general welfare.				
<b>Site Plan Ordinance</b>	No	-	-	-
<i>How does this reduce risk?</i>				
<b>Stormwater Management Ordinance</b>	No	-	-	-
<i>How does this reduce risk?</i>				
<b>Post-Disaster Recovery/ Reconstruction Ordinance</b>	No	-	-	-
<i>How does this reduce risk?</i>				
<b>Real Estate Disclosure</b>	No	-	-	-
<i>How does this reduce risk?</i>				
<b>Growth Management</b>	No	-	-	-
<i>How does this reduce risk?</i>				
<b>Environmental Protection Ordinance</b>	No	-	-	-
<i>How does this reduce risk?</i>				
<b>Flood Damage Prevention Ordinance</b>	Yes	Chapter 151 – Flood Damage Prevention – Ordinance 2014-06	Local	Floodplain Administrator
<i>How does this reduce risk?</i> It is the purpose of this chapter to promote the public health, safety, and general welfare and to minimize public and private losses due to flood conditions in specific areas by provisions designed to: <ul style="list-style-type: none"> <li>• Protect human life and health</li> <li>• Minimize expenditure of public money for costly flood control projects</li> <li>• Minimize the need for rescue and relief efforts associated with flooding and generally undertaken at the expense of the general public</li> <li>• Minimize prolonged business interruptions</li> <li>• Minimize damage to public facilities and utilities such as water and gas mains; electric, telephone, and sewer lines; and streets and bridges located in floodplains</li> <li>• Help maintain a stable tax base by providing for the sound use and development of flood-prone areas in such a manner as to minimize future flood blight areas</li> <li>• Ensure that potential buyers are notified that property is in a flood area</li> </ul>				
<b>Wellhead Protection</b>	No	-	-	-
<i>How does this reduce risk?</i>				
<b>Emergency Management Ordinance</b>	No	-	-	-
<i>How does this reduce risk?</i>				
<b>Climate Change Ordinance</b>	No	-	-	-
<i>How does this reduce risk?</i>				
<b>Other</b>	No	-	-	-
<b>Planning Documents</b>				
<b>Comprehensive/Master Plan</b>	Yes	City of Meadows Place Comprehensive Plan	Local	City Council, Planning and Zoning Commission
<i>How does this reduce risk?</i> The Comprehensive Plan is adopted as a present statement of policy by the City and as a guide for future land use decisions within the City. The Plan provides requirements for residential property and development including density of neighborhoods, capital improvements such as water and sewer				



	Jurisdiction has this? (Yes/No)	Code Citation and Date (code chapter, name of plan, date of plan)	Authority (local, county, state, federal)	Individual / Department / Agency Responsible
services, ingress and egress, and non-residential development adjacent to residential development. The plan also establishes requirements for business districts, U.S. Highway 59, Public services, lands abutting arterials, and circulation of traffic.				
<b>Capital Improvement Plan</b>	Yes	Capital Improvement Plan, September 1, 2022	Local	Public Works Director
<i>How does this reduce risk?</i> Allocates funding for potential mitigation projects.				
<b>Disaster Debris Management Plan</b>	No	-	-	-
<i>How does this reduce risk?</i>				
<b>Floodplain Management or Watershed Plan</b>	No	-	-	-
<i>How does this reduce risk?</i>				
<b>Stormwater Management Plan</b>	No	-	-	-
<i>How does this reduce risk?</i>				
<b>Open Space Plan</b>	No	-	-	-
<i>How does this reduce risk?</i>				
<b>Urban Water Management Plan</b>	No	-	-	-
<i>How does this reduce risk?</i>				
<b>Habitat Conservation Plan</b>	No	-	-	-
<i>How does this reduce risk?</i>				
<b>Economic Development Plan</b>	Yes	September 1, 2022	Local	Economic Develop Corp-
<i>How does this reduce risk?</i> Assist with guidance in new development. Supports community awareness project for Hazard Mitigation				
<b>Shoreline Management Plan</b>	No	-	-	-
<i>How does this reduce risk?</i>				
<b>Community Wildfire Protection Plan</b>	No	-	-	-
<i>How does this reduce risk?</i>				
<b>Community Forest Management Plan</b>	No	-	-	-
<i>How does this reduce risk?</i>				
<b>Transportation Plan</b>	No	-	-	-
<i>How does this reduce risk?</i>				
<b>Agriculture Plan</b>	No	-	-	-
<i>How does this reduce risk?</i>				
<b>Climate Action/ Resiliency/Sustainability Plan</b>	No	-	-	-
<i>How does this reduce risk?</i>				
<b>Tourism Plan</b>	No	-	-	-
<i>How does this reduce risk?</i>				
<b>Business/ Downtown Development Plan</b>	No	-	-	-
<i>How does this reduce risk?</i>				
<b>Other</b>	No	-	-	-
<b>Response/Recovery Planning</b>				
<b>Comprehensive Emergency Management Plan</b>	Yes	Comprehensive Emergency Management Plan	Local	Emergency Management Coordinator
<i>How does this reduce risk?</i>				



	Jurisdiction has this? (Yes/No)	Code Citation and Date (code chapter, name of plan, date of plan)	Authority (local, county, state, federal)	Individual / Department / Agency Responsible
The Comprehensive Emergency Management Plan outlines the organization, establishment, and designated divisions and functions; assigns responsibilities, tasks, duties, and powers; and designates officers and employees to carry out specific actions prior to and after an emergency event.				
<b>Continuity of Operations Plan</b>	No	-	-	-
<i>How does this reduce risk?</i>				
<b>Strategic Recovery Planning Report</b>	No	-	-	-
<i>How does this reduce risk?</i>				
<b>Threat &amp; Hazard Identification &amp; Risk Assessment (THIRA)</b>	No	-	-	-
<i>How does this reduce risk?</i>				
<b>Post-Disaster Recovery Plan</b>	No	-	-	-
<i>How does this reduce risk?</i>				
<b>Public Health Plan</b>	Yes	The Fort Bend County Health and Human Services Department (FBHHS) provides public health services for the City. FBHHS has public health plans as part of Annex H of the Fort Bend County Emergency Operations Plan.	County	FBHHS
<i>How does this reduce risk?</i> FBHHS has plans in place to prevent public health issues through regular inspections of regulated facilities, as well as prepare for and respond to public health emergencies.				
<b>Other</b>	No	-	-	-
<i>How does this reduce risk?</i>				

**Development and Permitting Capability**

The table below summarizes the capabilities of the City of Meadows Place to oversee and track development.

**Table 9.7-3. Development and Permitting Capability**

Indicate if your jurisdiction implements the following	Yes/No	Comment:
Do you issue development permits? • If yes, what department is responsible?	Yes	Local Permits Department
If you do not issue development permits, what is your process for tracking new development?	N/A	-
Are permits tracked by hazard area? (For example, floodplain development permits.)	No	-
Do you have a buildable land inventory? • If yes, please describe	Yes	Approximately 9 acres in a commercial, non-floodplain zone
Describe the level of build-out in your jurisdiction.	N/A	95% build-out, only a small portion available for commercial development

**Administrative and Technical Capability**

The table below summarizes potential staff and personnel resources available to the City of Meadows Place and their current responsibilities that contribute to hazard mitigation.



Table 9.7-4. Administrative and Technical Capabilities

Resources	Available? (Yes/No)	Comments (available staff, responsibilities, support of hazard mitigation)
<b>Administrative Capability</b>		
Planning Board	Yes	The Planning and Zoning Board (P&Z) considers the impact of proposed development and zoning changes to the City. The Board seeks to achieve a balance between the needs of business and the rights of property owners while encouraging economic prosperity and development for the City. The Board’s recommendations are used by the Mayor and City Council to make decisions regarding such changes. P&Z may also review requests from homeowners and residents who wish to do something to their home that may not have been allowed in the past, or that may not be covered and require a change in the zoning ordinances and can cover a wide range of items.
Zoning Board of Adjustment	Yes	The Board of Adjustment (“BOA”) is responsible for considering applications for special exceptions or variances to the Zoning Code. Homeowners, landowners, or their agents, apply to the Building Official for a hearing. Formal dockets, which must be legally advertised, are scheduled for the BOA.
Planning Department	No	-
Mitigation Planning Committee	No	-
Environmental Board/Commission	No	-
Open Space Board/Committee	No	-
Economic Development Commission/Committee	Yes	Economic Development Corporation
Public Works/Highway Department	Yes	The Public Works Department is responsible for water, sewer, building and grounds maintenance. The Public Works Department oversees the operation of its three water plants, the water distribution system, a 1.5-million-gallon Wastewater Treatment Plant and a Sewer Collection System in accordance with rules and regulations set by the Environmental Protection Agency and the Texas Commission on Environmental Quality
Construction/Building/Code Enforcement Department	Yes	Code Enforcement works with property owners and occupants to maintain the status of our City as a clean, livable, and a safe place by routinely inspecting the City, responding to complaints, and notifying residents of code violations. Daily activities include removal of illegal signs, identifying non-permitted work, and enforcement of the City Codes of Ordinances including zoning ordinances.
Emergency Management/Public Safety Department	Yes	Emergency Management includes the City Police and Fire Department.
Warning Systems / Services (mass notification system, outdoor warning signals, etc.)	No	-
Maintenance programs to reduce risk (stormwater maintenance, tree trimming, etc.)	No	-
Mutual aid agreements	No	-
Human Resources Manual	No	-
Other	No	-
<b>Technical/Staffing Capability</b>		
Planners or engineers with knowledge of land development and land management practices	No	-
Engineers or professionals trained in building or infrastructure construction practices	No	-



Resources	Available? (Yes/No)	Comments (available staff, responsibilities, support of hazard mitigation)
Planners or engineers with an understanding of natural hazards	Yes	Floodplain Administrator
Staff with expertise or training in benefit/cost analysis	No	-
Professionals trained in conducting damage assessments	No	-
Personnel skilled or trained in GIS and/or Hazards United States (HAZUS) – Multi-Hazards (MH) applications	No	-
Environmental scientist familiar with natural hazards	No	-
Surveyor(s)	No	-
Emergency manager	Yes	Emergency Management Coordinator
Grant writer(s)	Yes	Police Department has a part-time grant writer
Resilience officer	No	-
Other (this could include stormwater engineer, environmental specialist, etc.)	No	-

**Fiscal Capability**

The table below summarizes financial resources available to the City of Meadows Place.

**Table 9.7-5. Fiscal Capabilities**

Financial Resources	Accessible or Eligible to Use? (Yes/No)
Community development Block Grants (CDBG, CDBG-DR)	Yes
Capital improvements project funding	Yes
Authority to levy taxes for specific purposes	Yes
User fees for water, sewer, gas, or electric service	Yes
Impact fees for homebuyers or developers of new development/homes	No
Stormwater utility fee	No
Incur debt through general obligation bonds	No
Incur debt through special tax bonds	Yes
Incur debt through private activity bonds	No
Withhold public expenditures in hazard-prone areas	No
Other federal or state funding programs	Yes
Open space acquisition funding programs	No
Other (for example, Clean Water Act 319 Grants [Nonpoint Source Pollution])	No

**Education and Outreach Capability**

The table below summarizes the education and outreach resources available to the City of Meadows Place.

**Table 9.7-6. Education and Outreach Capabilities**

Outreach Resources	Available? (Yes/No)	Comment:
Public information officer or communications office	Yes	Meadows Place Communications Director
Personnel skilled or trained in website development	Yes	MP Communications Director
Hazard mitigation information available on your website	No	-
Social media for hazard mitigation education and outreach	No	-
Citizen boards or commissions that address issues related to hazard mitigation	No	-



Outreach Resources	Available? (Yes/No)	Comment:
Warning systems for hazard events	Yes	Code Red, Website, Social Media
Natural disaster/safety programs in place for schools	Yes	With Fort Bend ISD Police Dept./EMC
Does the jurisdiction have any public outreach mechanisms / programs in place to inform citizens on natural hazards, risk, and ways to protect themselves during such events? <ul style="list-style-type: none"> <li>If yes, please describe.</li> </ul>	Yes	FBC-OEM

**Community Classifications**

The table below summarizes classifications for community programs available to the City of Meadows Place.

**Table 9.7-7. Community Classifications**

Program	Participating? (Yes/No)	Classification (if applicable)	Date Classified (if applicable)
Community Rating System (CRS)	No	-	-
Building Code Effectiveness Grading Schedule (BCEGS)	No	-	-
Public Protection (ISO Fire Protection Classes 1 to 10)	No	-	-
Storm Ready Certification	No	-	-
Firewise Communities classification	No	-	-
Other	No	-	-

**Adaptive Capacity**

Adaptive capacity is defined as “the ability of systems, institutions, humans, and other organisms to adjust to potential damage, to take advantage of opportunities, or respond to consequences” (IPCC 2014). Each jurisdiction has a unique combination of capabilities to adjust to, protect from, and withstand a future hazard event, future conditions, and changing risk. The table below summarizes the adaptive capacity for each identified hazard of concern and the jurisdiction’s capability to address related actions using the following classifications:

- Strong: Capacity exists and is in use.
- Moderate: Capacity might exist but is not used or could use some improvement.
- Weak: Capacity does not exist or could use substantial improvement.

**Table 9.7-8. Adaptive Capacity**

Hazard	Adaptive Capacity – Strong/Moderate/Weak
Dam/Levee Failure	Moderate
Disease Outbreak	Moderate
Drought	Moderate
Extreme Temperature	Moderate
Flood	Moderate
Geologic Hazards	Moderate
Hurricane/Tropical Storm	Moderate
Severe Weather	Moderate
Tornado	Moderate
Wildfire	Moderate
Winter Weather	Moderate

**9.7.4 National Flood Insurance Program (NFIP) Compliance**







This section provides specific information on the management and regulation of the regulatory floodplain, including current and future compliance with the NFIP. The Floodplain Administrator is responsible for maintaining this information and is listed in the Hazard Mitigation Planning Team table at the beginning of this annex.

**NFIP Summary**

The following table summarizes the NFIP statistics for the City of Meadows Place.

**Table 9.7-9. NFIP Summary**

Municipality	Policies in Force	Number of Paid Claims*	Amount of Paid Claims*	Number of NFIP RL Properties	Number of NFIP SRL Properties
Meadows Place (C)	N/A	1	\$13,509.63	0	0

Sources: a BureauNet 2022 (<https://nfipservices.floodsmart.gov/reports-flood-insurance-data>)  
 b 2018 Fort Bend County HMP

Notes: Due to a contractual agreement with FEMA, detailed information at the municipal level was not available to incorporate into the 2023 HMP Update. The information presented here was collected from data provided by the State of Texas and from FEMA's HUDEX Report.

\*Number of RL and SRL properties provided by the State of Texas

\*\*Total policies in force and paid claims collected from FEMA's OpenFEMA Dataset: FIMA NFIP Redacted Claims

RL Repetitive Loss

SRL Severe Repetitive Loss

**Flood Vulnerability Summary**

The following table provides a summary of the NFIP program in the City of Meadows Place.

**Table 9.7-10. NFIP Summary**

NFIP Topic	Comments
<b>Flood Vulnerability Summary</b>	
Describe areas prone to flooding in your jurisdiction. <ul style="list-style-type: none"> <li>Do you maintain a list of properties that have been damaged by flooding?</li> </ul>	Yes. 12381 W. Belfort is the only address/property within the floodplain
<ul style="list-style-type: none"> <li>Do you maintain a list of property owners interested in flood mitigation?</li> <li>How many homeowners and/or business owners are interested in mitigation (elevation or acquisition)?</li> </ul>	No
Are any RiskMAP projects currently underway in your jurisdiction? <ul style="list-style-type: none"> <li>If so, state what projects are underway.</li> </ul>	No
<ul style="list-style-type: none"> <li>How do you make Substantial Damage determinations?</li> <li>How many were declared for recent flood events in your jurisdiction?</li> </ul>	For City property/structures: TML, Professional Contractors - Follow FBC-OEM/TDEM/FEMA Process  For private business/residences: Other sources per FBC-OEM/FEMA Guidelines  Zero recent flood events
How many properties have been mitigated (elevation or acquisition) in your jurisdiction? <ul style="list-style-type: none"> <li>If there are mitigated properties, how were the projects funded?</li> </ul>	None
Do your flood hazard maps adequately address the flood risk within your jurisdiction? <ul style="list-style-type: none"> <li>If not, state why.</li> </ul>	Yes
<b>NFIP Compliance</b>	
What local department is responsible for floodplain management?	Department of Public Works



NFIP Topic	Comments
Are any certified floodplain managers on staff in your jurisdiction?	Yes
Do you have access to resources to determine possible future flooding conditions from climate change?	No
Does your floodplain management staff need any assistance or training to support its floodplain management program? <ul style="list-style-type: none"> <li>If so, what type of assistance/training is needed?</li> </ul>	No, we do not have any area in the floodplain.
Provide an explanation of NFIP administration services you provide (e.g., permit review, GIS, education/outreach, inspections, engineering capability).	We do not have any unmitigated area. No floodplain property.
How do you determine if proposed development on an existing structure would qualify as a substantial improvement?	N/A
What are the barriers to running an effective NFIP program in the community, if any?	N/A
Does your jurisdiction have any outstanding NFIP compliance violations that need to be addressed? <ul style="list-style-type: none"> <li>If so, state the violations.</li> </ul>	N/A
When was the most recent Community Assistance Visit (CAV) or Community Assistance Contact (CAC)?	Unknown
<ul style="list-style-type: none"> <li>What is the local law number or municipal code of your flood damage prevention ordinance?</li> <li>What is the date that your flood damage prevention ordinance was last amended?</li> </ul>	Chapter 151, 151.04 03-25-2014
Does your floodplain management program meet or exceed minimum requirements? <ul style="list-style-type: none"> <li>If exceeds, in what ways?</li> </ul>	Exceed through the CRS requirements and actions taken to reach Class 7.
Are there other local ordinances, plans, or programs (e.g., site plan review) that support floodplain management and meeting the NFIP requirements? For instance, does the planning board or zoning board consider efforts to reduce flood risk when reviewing variances such as height restrictions?	All covered in Chapter 151
Does your community plan to join the CRS program, or is your community interested in improving your CRS classification?	Current CRS Community Rating of 7

### 9.7.5 Growth/Development Trends

Understanding how past, current, and projected development patterns have or are likely to increase or decrease risk in hazard areas is a key component to appreciating a jurisdiction’s overall risk to its hazards of concern. The table below summarizes recent and expected future development trends, including major residential/commercial development and major infrastructure development.

**Table 9.7-11. Number of Building Permits for New Construction**

Type of Development	2018		2019		2020		2021		2022	
<b>Number of Building Permits for New Construction Issued Since the previous HMP* (total/within regulatory floodplain)</b>										
	Total	Within SFHA	Total	Within SFHA	Total	Within SFHA	Total	Within SFHA	Total	Within SFHA
Single-Family	0	0	0	0	0	0	0	0	0	0
Multi-Family	0	0	0	0	0	0	0	0	0	0
Other (commercial, mixed-use, etc.)	0	0	1	0	0	1	0	0	0	0



Type of Development	2018		2019		2020		2021		2022	
<b>Total Permits Issued</b>	<b>0</b>	<b>0</b>	<b>1</b>	<b>0</b>	<b>0</b>	<b>1</b>	<b>0</b>	<b>0</b>	<b>0</b>	<b>0</b>

SFHA Special Flood Hazard Area (1% annual chance flood event)

\* Only location-specific hazard zones or vulnerabilities identified.

**Table 9.7-12. Recent and Expected Future Development**

Property or Development Name	Type (e.g., Res., Comm.)	# of Units / Structures	Address and Parcel ID	Known Hazard Zone(s)	Description/Status of Development
<b>Recent Major Development from 2018 to Present</b>					
Aldi/Starbucks Strip Center	Commercial	2	11700 Block of W. Airport Blvd	Expansive Soils	Completed
Jiffy Lube	Commercial	1	11700 Block W. Airport Blvd.	Expansive Soils	In Progress
<b>Known or Anticipated Major Development in the Next Five (5) Years</b>					
None Identified					

### 9.7.6 Jurisdictional Risk Assessment

The hazard profiles in Volume 1, Section 4 (Risk Assessment) provide detailed information regarding each plan participant’s vulnerability to the identified hazards. Section 4.1 (Methodology and Tools) and Section 4.4 (Hazard Ranking) provide detailed summaries for the City of Meadows Place’s risk assessment results and data used to determine the hazard ranking discussed later in this section.

Hazard area extent and location maps provided below illustrate the probable areas impacted within the jurisdiction based on the best available data at the time of the preparation of this plan and are adequate for planning purposes. Maps were generated only for those hazards that can be identified clearly using mapping techniques and technologies and for which the City of Meadows Place has significant exposure. The maps also show the location of potential new development, where available. As shown in the maps below, the City has low risk associated with the dam inundation, inland erosion, or wildfire hazards. However, the City is still exposed to these risk as:

- Meadows Place chose to include dam failure as a hazard despite having low risk.
- Meadows Place may still experience geologic hazards associated with inland erosion. For this plan, the inland erosion hazard area includes areas with K values of 0.49 or higher. Since areas with values lower than 4.9 were not assessed, the City elected to include the inland erosion/geologic hazard.
- Meadows Place can still experience smoke and evacuations from wildfires, as the map is evaluating risk to high/very high areas exposed to wildfire, and not low/very low for this plan; and Meadows Place chose to include as a hazard.



Figure 9.7-1. City of Meadows Place Hazard Area Extent and Location Map- Dam Inundation

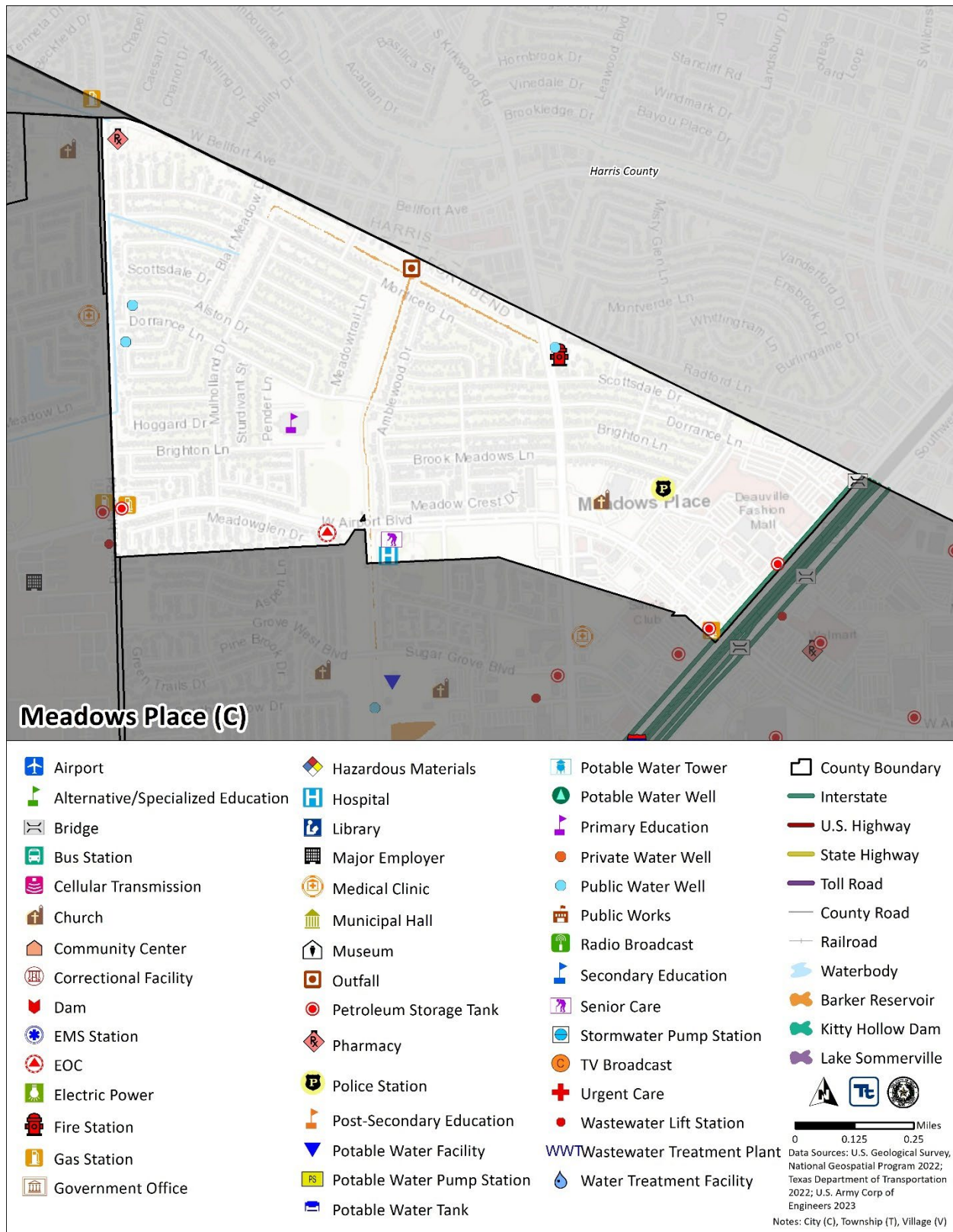






Figure 9.7-2. City of Meadows Place Hazard Area Extent and Location Map-Expansive Soils

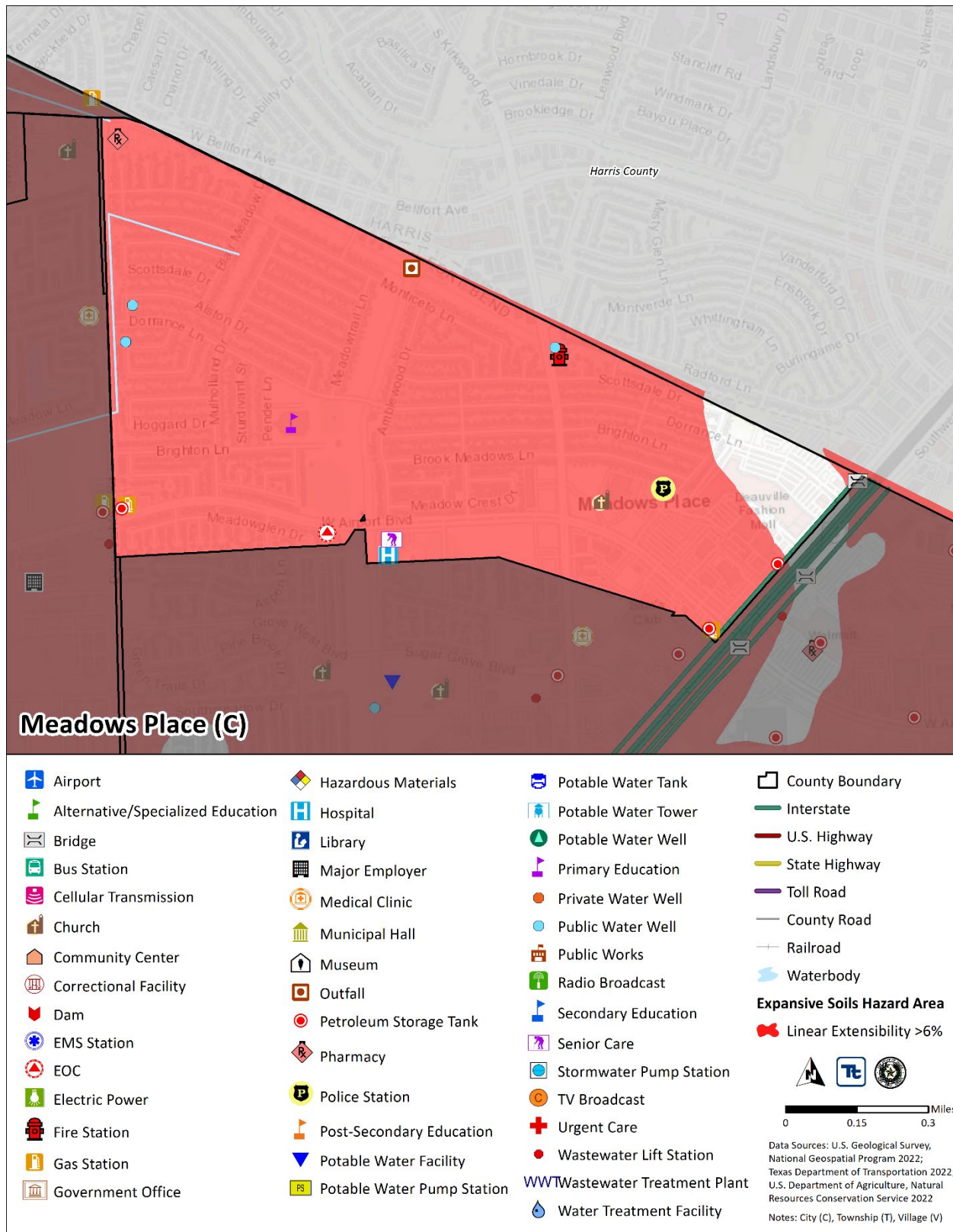




Figure 9.7-3. City of Meadows Place Hazard Area Extent and Location Map-Flood

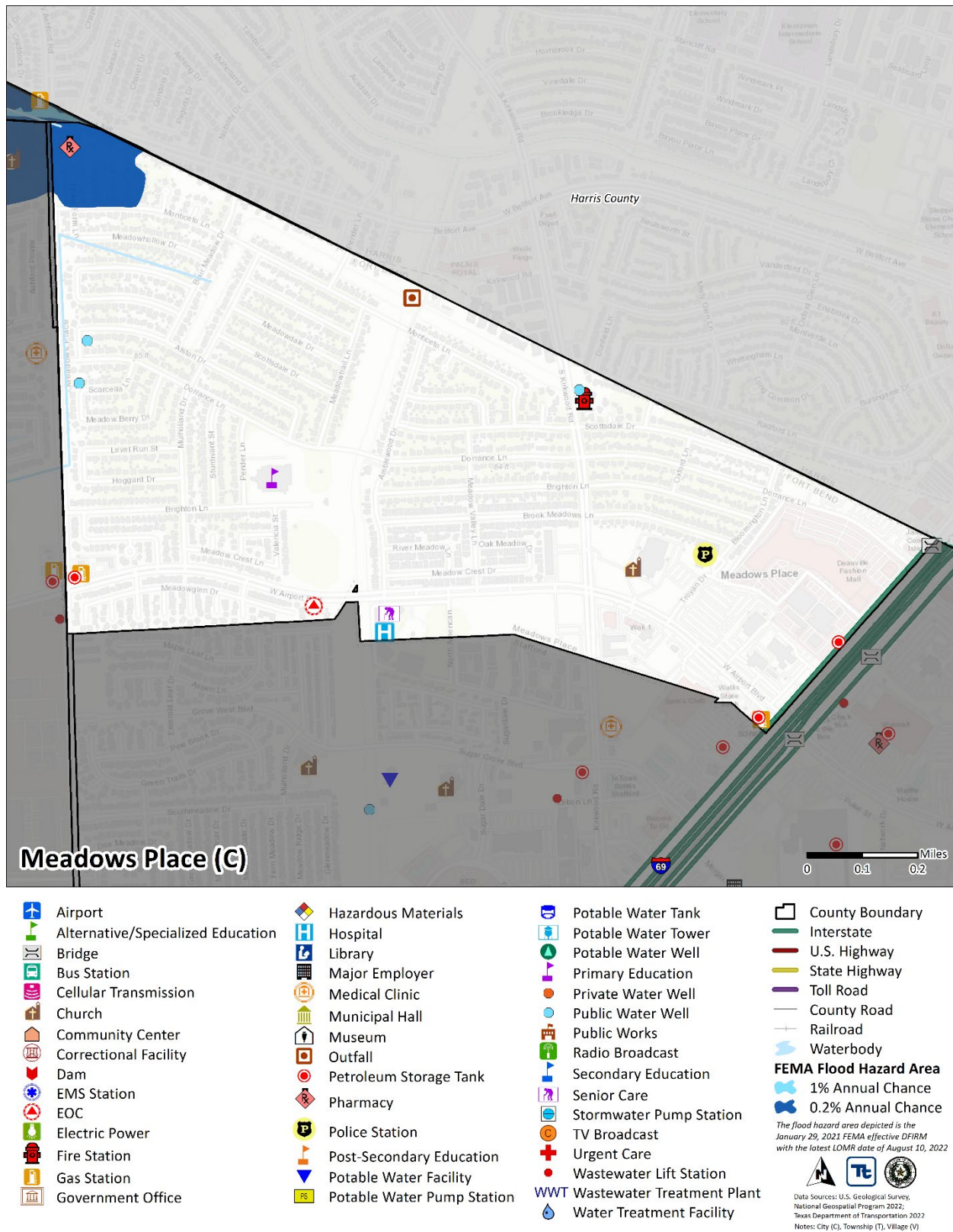






Figure 9.7-4. City of Meadows Place Hazard Area Extent and Location Map-Inland Erosion

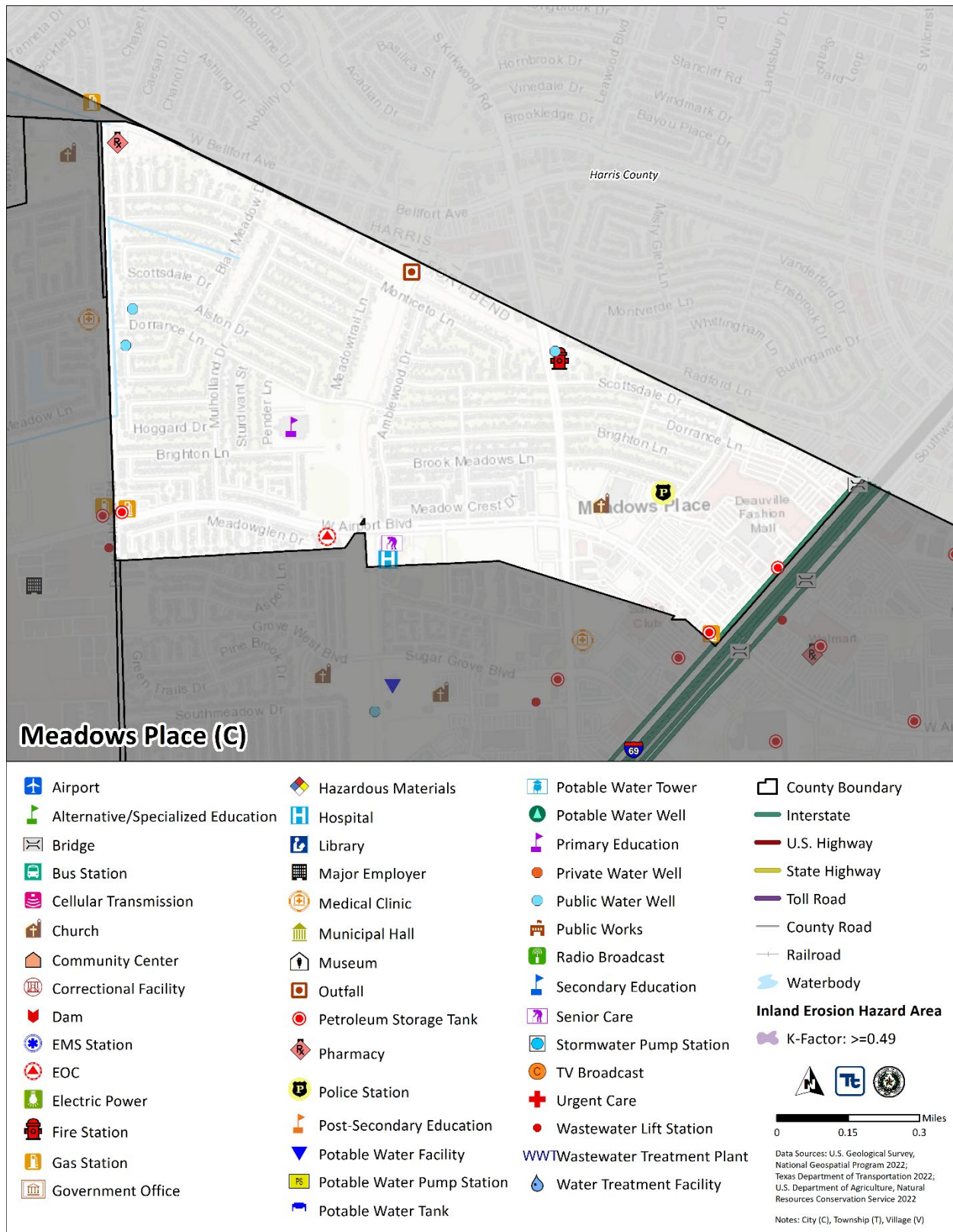
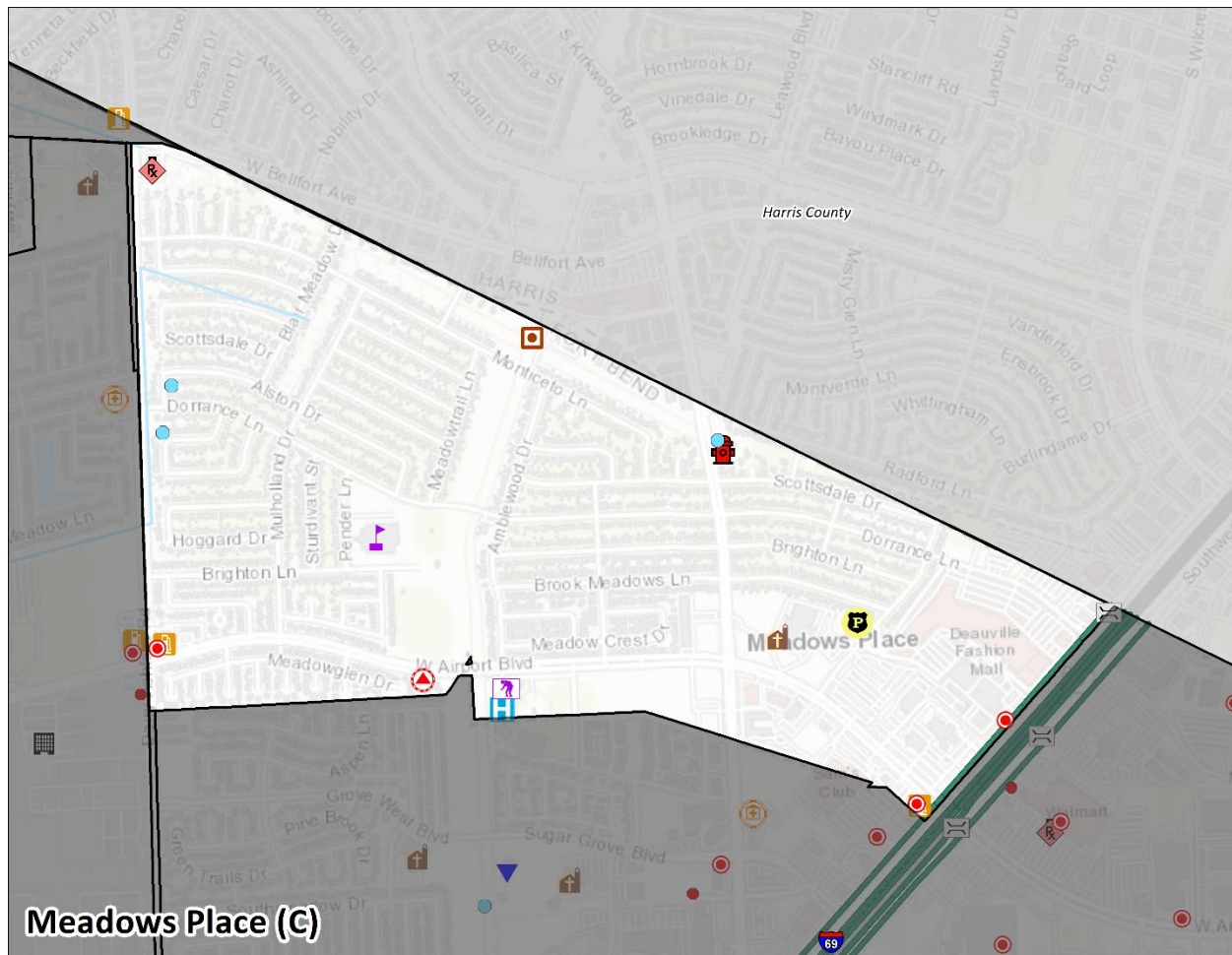




Figure 9.7-5. City of Meadows Place Hazard Area Extent and Location Map-Wildfire



Meadows Place (C)

- |                                   |                            |                         |                               |
|-----------------------------------|----------------------------|-------------------------|-------------------------------|
| Airport                           | Hazardous Materials        | Potable Water Tower     | County Boundary               |
| Alternative/Specialized Education | Hospital                   | Potable Water Well      | Interstate                    |
| Bridge                            | Library                    | Primary Education       | U.S. Highway                  |
| Bus Station                       | Major Employer             | Private Water Well      | State Highway                 |
| Cellular Transmission             | Medical Clinic             | Public Water Well       | Toll Road                     |
| Church                            | Municipal Hall             | Public Works            | County Road                   |
| Community Center                  | Museum                     | Radio Broadcast         | Railroad                      |
| Correctional Facility             | Outfall                    | Secondary Education     | Waterbody                     |
| Dam                               | Petroleum Storage Tank     | Senior Care             | <b>Wildfire Hazard Area</b>   |
| EMS Station                       | Pharmacy                   | Stormwater Pump Station | Low Threat                    |
| EOC                               | Police Station             | TV Broadcast            | Moderate Threat               |
| Electric Power                    | Post-Secondary Education   | Urgent Care             | WWTWastewater Treatment Plant |
| Fire Station                      | Potable Water Facility     | Wastewater Lift Station | Water Treatment Facility      |
| Gas Station                       | Potable Water Pump Station |                         |                               |
| Government Office                 | Potable Water Tank         |                         |                               |

Data Sources: U.S. Geological Survey, National Geospatial Program 2022, Texas Department of Transportation 2022, Texas A&M Forest Service 2022  
 Notes: City (C), Township (T), Village (V)







**Hazard Event History**

Fort Bend County has a history of natural and non-natural hazard events, as detailed in Volume I, Section 4 (Risk Assessment). A summary of historical events is provided in each of the hazard profiles and includes a chronology of events that have affected the County and its municipalities.

The City of Meadows Place’s history of federally declared (as presented by FEMA) and significant hazard events [as presented in NOAA-National Centers for Environmental Information (NCEI)] is consistent with that of the County. The table below provides details regarding municipal-specific loss and damages the City of Meadows Place experienced during hazard events since the last hazard mitigation plan update. Information provided in the table below is based on reference material or local sources.

**Table 9.7-13. Hazard Event History**

Dates of Event	Event Type (Disaster Declaration, if applicable)	County Designated?	Summary of Event	Municipal Summary of Damages and Losses
January 20, 2020 – continuing	EM-3458 – Covid-19; DR-4485 – Covid-19 Pandemic	Yes	COVID-19 pandemic	City offices closed, limited City services available. Many businesses closed or limited operations Supply chain disruptions. Personnel shortages, increased sick leave, Mandatory OT/High Risk protocol implemented for City/Police, Partial activation of EOC. Financial impact \$253k.
July 25-31, 2020	EM-3530 – Hurricane Hanna	Yes	Hurricane-force winds resulted in significant number of downed trees and utility lines.	Although the County was impacted, the City did not report significant impacts.
August 23-27, 2020	EM-3540 – Tropical Storms Marco and Laura	Yes	Fort Bend County activated its emergency operations center as fringe impacts of Tropical Storms Marco and Laura impacted the County.	Limited activation of EOC. Mandatory personnel/overtime. Approx \$14k for overtime - both events. City personnel dismissed early pending weather conditions Many City services unavailable.
September 12-18, 2021	EM-3572 Hurricane Nicholas	No	Hurricane Nicholas produced several hours of tropical storm-force sustained winds and gusts. There were numerous power outages and minor to moderate damage to some structures and roofs. Trees down in areas.	Although the County was impacted, the City did not report significant impacts.
February 11-21, 2021	DR-4586; EM 3554 – Severe Winter Storms	Yes	Winter Storm Uri distributed a record amount of snow throughout Texas. Snow, ice, and ultra-low temperatures caused widespread road closures.	EOC Activation. City offices closed, limited City services available. Many businesses closed or limited operations Supply chain disruptions (financial impact. )Personnel shortages, increased OT Approx \$39K.

Source: FEMA 2023; NOAA 2023

In addition to the significant events listed above, the City has been impacted by significant rain events, resulting in flooding of local streets and power outages. Response has included deployment of high water vehicles.



**Hazard Ranking and Vulnerabilities**

The hazard profiles in Volume 1, Section 4 (Risk Assessment) have detailed information regarding each plan participant’s vulnerability to the identified hazards. The following summarizes the City of Meadows Place’s risk assessment results and data used to determine the hazard ranking.

**Hazard Ranking**

This section provides the community-specific identification of the primary hazard concerns based on identified problems, impacts, and the results of the risk assessment as presented in Volume 1, Section 4 (Risk Assessment). The ranking process involves an assessment of the likelihood of occurrence for each hazard; the potential impacts of the hazard on people, property, and the economy; and community capabilities to address the hazard and changing future climate conditions. Mitigation action development uses the inputs from the evaluation to target those hazards with highest level of concern.

As discussed in Volume 1, Section 4.4 (Hazard Ranking), each participating jurisdiction has differing degrees of risk exposure and vulnerability compared with the County as a whole. Therefore, each municipality ranked the degree of risk to each hazard as it pertains to their community. The table below summarizes the hazard risk/vulnerability rankings of potential natural hazards for the City of Meadows Place. The City of Meadows Place reviewed the County hazard risk/vulnerability risk ranking table and individual results to reflect the relative risk of the hazards of concern to the community.

During the review of the hazard/vulnerability risk ranking, the City of Meadows Place agreed with the following rankings:

**Table 9.7-14. Hazard Ranking Input**

Hazard	Rankings
Dam/Levee Failure	Low
Disease Outbreak	Low
Drought	Medium
Extreme Temperature	Medium
Flood	Low
Geologic Hazards	High
Hurricane/Tropical Storm	Medium
Severe Weather	High
Tornado	Medium
Wildfire	Low
Winter Weather	Low

**Critical Facilities**

The table below identifies the number of critical facilities and community lifelines in the community located in hazard areas. The community reviewed the list of facilities and lifelines to determine appropriate mitigation measures for the facilities, where appropriate. Refer to Section 4.3 (Hazard Profiles) for details on the risk assessment and the facilities and lifelines exposed to each hazard of concern.



**Table 9.7-15. Potential Flood Losses to Critical Facilities**

Jurisdiction	1-Percent Annual Chance Flood Event Hazard Area		Wildfire Hazard Area – Moderate Risk		Inland Erosion (K-Factor: >= 0.49) Hazard Area		Expansive Soils (Linear Extensibility >6%) Hazard Area		Dam Inundation Hazard Area - Barker Reservoir Dam Inundation Area		Dam Inundation Hazard Area - Lake Sommerville Dam Inundation Area		Dam Inundation Hazard Area - Kitty Hollow Dam Inundation Area	
	Critical Facilities	Lifelines	Critical Facilities	Lifelines	Critical Facilities	Lifelines	Critical Facilities	Lifelines	Critical Facilities	Lifelines	Critical Facilities	Lifelines	Critical Facilities	Lifelines
Meadows Place (C)	0	0	0	0	0	0	17	16	0	0	0	0	0	0

Source: Fort Bend County; Hazus v5.1; FEMA 2022; Fort Bend Drainage District 2023



### Identified Issues

After review of the City of Meadows Place’s hazard event history, hazard rankings, jurisdiction specific vulnerabilities, hazard area extent and location, and current capabilities, the City of Meadows Place identified the following vulnerabilities within their community:

- Installing wind straps for Police Department roof.\*
- There is flooding (water ponds on roads) at intersections: W. Airport Blvd at S. Kirkwood Rd. & W. Airport Blvd. at S.W.Freeway, which can impact emergency services and access. \*
- The City lacks backup power to critical facilities, which prevents them from performing a continuity of operations during extreme hazard events. Backup power is needed for the following critical facilities\*:
  - EOC
  - Wastewater Treatment Plant
  - Water Well #3
  - Police Dept./City Hall
- The City residents lack knowledge and education related to hazard mitigation and awareness as well as flood insurance.
- The City does not have an up-to-date current evacuation plan that addresses all hazards of concern that may require an evacuation plan.
- The school-age population is at risk from hazards while school is in session.
- The City does not have a listing of potential mitigation projects and efforts to reduce natural hazard risks for the knowledge of residents and City departments.\*
- The Police Department experiences problems with wind events destroying and ripping off parts of the roof.
- The City does not have cooling stations established to protect residents in case of extreme temperature and utility failure.
- The City experiences icing conditions on roadways/bridges throughout the jurisdiction during extreme temperatures and winter weather conditions.
- The City does not have routine maintenance completed on drainage systems, which contributes to overflows and flooding.
- The City has one repetitive loss and severe repetitive loss property. Many of these structures were built without flood design standards. These properties require mitigation to prevent future losses and prevent loss of life and property damage.

*\*This issue was identified as a specific area of concern based on resident response to the Fort Bend County Hazard Mitigation public survey.*

### 9.7.7 Mitigation Strategy and Prioritization

This section discusses past mitigations actions and status, describes proposed hazard mitigation initiatives, and prioritizes actions to address over the next five years.

#### Past Mitigation Initiative Status

The following table indicates progress on the community’s mitigation strategy identified in the 2018 HMP. Actions that are in progress are carried forward and combined with new actions as part of this 2023 HMP update and are included in the tables with prioritization. Previous actions that are now ongoing programs and capabilities are indicated as such and previously presented in the Capability Assessment earlier in this annex.



Table 9.7-16. Status of Previous Mitigation Actions

Project	Responsible Party	What is the status? (e.g., In Progress, No Progress, Ongoing Capability, or Completed) If in progress or completed, please describe the funding source, cost, and who is implementing.	If you did not complete the action, should the action be included in the 2023 HMP (i.e., there is still a need, this is still a priority)?		
			Yes/No	If Yes, please describe the original problem (i.e., hazard, location, historic losses)	If Yes, identify the responsible department/person to implement the project.
Pursue Contract for Shade Removal	Meadows Place Director of Parks	Complete	No	-	-
Install Emergency Backup Generator	Meadows Place Director of Public Works/Utilities	In Progress	Yes	No emergency power during power outages. EOC/Wastewater Treatment Plant/Water Well #3	Local - Public Works
Promote Flood Insurance	Meadows Place EMC	In Progress	Yes	Public Awareness of Flood Insurance availability	Local – Communications Director
Increase Public Awareness on Mitigation Evacuation Plan	Meadows Place EMC	In Progress	Yes	Increase Public Awareness	Local – Communications Director
	Meadows Place EMC, Fort Bend Health Dept.	In Progress	Yes	Develop Interlocal agreements for Evacuation Procedures	EMC/FBC-OEM
Apply for Firewise Recognition	Meadows Place EMC, City of Stafford Fire Dept.	No Progress	No	-	-
Link to Drought Monitor	Meadows Place EMC	No Progress	No	-	-
Cooling Plan	Meadows Place EMC	In Progress	Yes	Cooling Stations for severe weather events	EMC/FBC-OEM
Sanding Prioritization Plan	Meadows Place Public Works	In Progress	Yes	Icing conditions roadways/bridges	FBC/Public Works
Co-Market Large Item Pickup	Meadows Place EMC	No Progress	No	-	-
Retrofit EOC	Meadows Place EMC	In Progress	Yes	Emergency Power during power outages for Emergency Operations Center	Public Works
City Hall Wind Strapping	Meadows Place Public Works	No Progress	No		
Police Department Wind strap for roof	Meadows Place Public Works	No Progress	Yes	New Police Department Design consideration	Public Works
City Hall/Police Department Generator	Meadows Place EMC	No Progress	Yes	Emergency Power for Police Dept. & City Hall (Same building)	Public Works



**Additional Mitigation Efforts**

In addition to the mitigation initiatives completed in the table above, the City of Meadows Place identified the following mitigation efforts completed since the last HMP:

- None identified

**Proposed Hazard Mitigation Initiatives for the HMP Update**

Fort Bend County participated in a mitigation action workshop in March 2023 and was provided the following FEMA publications to use as a resource as part of their comprehensive review of all possible activities and mitigation measures to address their hazards: FEMA Mitigation Ideas – A Resource for Reducing Risk to Natural Hazards (January 2013) and FEMA Mitigation Assistance Resource Guide for Texas (2020).

The table below indicates the range of proposed mitigation action categories. Both the four FEMA mitigation action categories and the six CRS mitigation action categories are listed in the table to further demonstrate the wide range of activities and mitigation measures selected.

**Table 9.7-17. Analysis of Mitigation Actions by Hazard and Category**

Hazard	FEMA				CRS					
	LPR	SIP	NSP	EAP	PR	PP	PI	NR	SP	ES
Dam/Levee Failure	X	X	-	X	X	-	X	-	-	X
Disease Outbreak	X	X	-	X	X	-	X	-	-	X
Drought	X	X	-	X	X	-	X	-	-	X
Extreme Temperature	X	X	-	X	X	-	X	-	-	X
Flood	X	X	-	X	X	X	X	-	X	X
Geologic Hazards	X	X	-	X	X	-	X	-	-	X
Hurricane/Tropical Storm	X	X	-	X	X	-	X	-	X	X
Severe Weather	X	X	-	X	X	-	X	-	X	X
Tornado	X	X	-	X	X	-	X	-	-	X
Wildfire	X	X	-	X	X	-	X	-	-	X
Winter Weather	X	X	-	X	X	-	X	-	X	X

Note: Mitigation categories are described below the Mitigation Initiatives.



The table below summarizes the specific mitigation initiatives the City of Meadows Place would like to pursue in the future to reduce the effects of hazards. The initiatives are dependent upon available funding (grants and local match availability) and may be modified or omitted at any time based on the occurrence of new hazard events and changes in municipal priorities.

**Table 9.7-18. Proposed Hazard Mitigation Initiatives**

Project Number	Mitigation Initiative Name	Description of Problem and Solution	Hazard(s) to be Mitigated	Goals Met	Estimated Timeline	Lead and Support Agencies	Potential Funding Sources	Estimated Benefits	Estimated Costs	Priority	Mitigation Category	CRS Category
2023-City of Meadows Place-001	Backup Generators	<p><b>Problem:</b> The City lacks backup power to critical facilities which prevents them from performing a continuity of operations during extreme hazard events. Backup power is needed for the following critical facilities:</p> <ul style="list-style-type: none"> <li>• EOC</li> <li>• Wastewater Treatment Plant</li> <li>• Water Well #3</li> <li>• Police Dept/City Hall</li> </ul> <p><b>Solution:</b> Conduct a generator study to see what size and types of generators are needed at each facility. Install backup power in the EOC; Wastewater Treatment Plant; Water Well #3 and the Police Department/City Hall building once the study has been completed.</p>	Dam/Levee Failure, Disease Outbreak, Drought, Extreme Temperature, Flood, Geologic Hazards, Hurricane/Tropical Storm, Severe Weather, Tornado, Wildfire, Winter Weather	2, 5	Within 5 years	Meadows Place Director of Public Works/Utilities	BRIC, HMGP, FMA, City Budget	The EOC, Wastewater Treatment Plant, Water Well #3 and Police Dept/City Hall will be able to perform continuity of operations during a hazard event.	>\$400,000	High	SIP	ES
2023-City of Meadows Place-002	Public Education	<p><b>Problem:</b> The City residents lack knowledge and education related to hazard mitigation and awareness as well as flood insurance.</p> <p><b>Solution:</b> The City will implement public education through social media posts, create a website for Hazard Mitigation/Disaster Awareness and Recovery, and will create an informative webpage</p>	Dam/Levee Failure, Disease Outbreak, Drought, Extreme Temperature, Flood, Geologic Hazards, Hurricane/Tropical Storm, Severe Weather, Tornado,	1	Within 1 year	Local – Communications Director	HMGP, City Budget	The residents of the City will be more knowledgeable of flood insurance and hazard mitigation/recovery	\$5,000	High	EAP	PR, PI



Project Number	Mitigation Initiative Name	Description of Problem and Solution	Hazard(s) to be Mitigated	Goals Met	Estimated Timeline	Lead and Support Agencies	Potential Funding Sources	Estimated Benefits	Estimated Costs	Priority	Mitigation Category	CRS Category
		relating to availability of Flood Insurance.	Wildfire, Winter Weather									
2023-City of Meadows Place-003	Evacuation Plan	<p><b>Problem:</b> The City does not have an up-to-date current evacuation plan that addresses all hazards of concern that may require an evacuation plan.</p> <p><b>Solution:</b> The City will work with the County to develop an interlocal agreement with neighboring jurisdictions for evacuation procedures.</p>	Dam/Levee Failure, Disease Outbreak, Drought, Extreme Temperature, Flood, Geologic Hazards, Hurricane/Tropical Storm, Severe Weather, Tornado, Wildfire, Winter Weather	2, 5	1 Year	EMC/FBC-OEM	HMGP, City Budget	The City will have an updated evacuation plan to implement in the event of an evacuation is needed.	\$5,000	High	LPR	ES
2023-City of Meadows Place-004	School Disaster Response Plan	<p><b>Problem:</b> The school-age population is at risk from hazards while school is in session.</p> <p><b>Solution:</b> The City will ensure that schools will develop a School Disaster Response Plan, that integrates the updated HMP, to safely evacuate, shelter, and protect the people located in the schools.</p>	Dam/Levee Failure, Disease Outbreak, Drought, Extreme Temperature, Flood, Geologic Hazards, Hurricane/Tropical Storm, Severe Weather, Tornado, Wildfire, Winter Weather	2, 5	1 Year	EMC/FBC-OEM	HMGP, City Budget	Schools will have a Disaster Response Plan implemented to protect their students.	\$3,000	High	LPR	ES
2023-City of Meadows Place-005	Human Resources Manual	<p><b>Problem:</b> The City does not have a listing of potential mitigation projects and efforts to reduce natural hazard risks for the knowledge of residents and City departments.</p> <p><b>Solution:</b> The City will create a project description human resources</p>	Dam/Levee Failure, Disease Outbreak, Drought, Extreme Temperature, Flood, Geologic Hazards,	2, 5	1 Year	EMC	HMGP, City Budget	City Departments and individuals will have a resource manual readily available full of hazard mitigation projects that can be completed.	\$3,000	High	EAP	PI





Project Number	Mitigation Initiative Name	Description of Problem and Solution	Hazard(s) to be Mitigated	Goals Met	Estimated Timeline	Lead and Support Agencies	Potential Funding Sources	Estimated Benefits	Estimated Costs	Priority	Mitigation Category	CRS Category
		list identifying Mitigation Projects and other efforts that reduce natural Hazard risks.	Hurricane/Tropical Storm, Severe Weather, Tornado, Wildfire, Winter Weather									
2023-City of Meadows Place-006	Cooling Plan	<b>Problem:</b> The City does not have cooling stations established to protect residents in case of extreme temperature and utility failure.  <b>Solution:</b> The City will establish Cooling Stations and install generators if needed for severe weather events that will operate in the event of a hazard event.	Extreme Temperature, Severe Weather	2, 5	2 Years	EMC/FBC-OEM	HMGP, BRIC, City Budget	The City will have cooling stations established to shelter their residents in the event of an extreme hazard.	\$5,000	High	SIP	ES
2023-City of Meadows Place-007	Sanding Prioritization Plan	<b>Problem:</b> The City experiences icing conditions on roadways/bridges throughout the jurisdiction during extreme temperatures and winter weather conditions.  <b>Solution:</b> The City will create a Sanding Prioritization Plan that prioritizes the order of roadway clearing in the event of icing and winter weather events.	Extreme Temperature, Winter Weather	2	1 Year	FBC/Public Works	BRIC, HMGP, City Budget	The City will be able to more efficiently clear roadways in the event of icing and winter weather.	\$3,000	High	LPR	ES
2023-City of Meadows Place-008	Police Department Wind Strap for Roof	<b>Problem:</b> The Police Department experiences problems with wind events destroying and ripping off parts of the roof.  <b>Solution:</b> The new Police Department design will include a wind strap for the roof to prevent wind destruction.	Severe Weather	2	1 Year	Public Works	BRIC, HMGP, City Budget	The City Police Department will not experience as much wind damage.	\$20,000	High	SIP	SP
2023-City of Meadows Place-009	Routine Storm Drain Maintenance	<b>Problem:</b> The City does not have routine maintenance completed on drainage systems which contributes to overflows and flooding.	Flood	2	Ongoing	Public Works, FBC	BRIC, HMGP, FMA, City Budget	The City will see reduced flooding and the storm drain system will remain cleared out given	\$10,000	High	SIP	PP



Project Number	Mitigation Initiative Name	Description of Problem and Solution	Hazard(s) to be Mitigated	Goals Met	Estimated Timeline	Lead and Support Agencies	Potential Funding Sources	Estimated Benefits	Estimated Costs	Priority	Mitigation Category	CRS Category
		<b>Solution:</b> The City will work County agencies to ensure that the drainage system remains cleaned out to reduce flooding issues.						routine maintenance is followed.				
2023-City of Meadows Place-010	Repetitive Loss Mitigation	<p><b>Problem:</b> The City has 1 repetitive loss and severe repetitive loss properties. Many of these structures were built without flood design standards. These properties require mitigation to prevent future losses and prevent loss of life and property damage.</p> <p><b>Solution:</b> The City will conduct outreach to the RL/SRL property owners and provide information on mitigation alternatives. After preferred mitigation measures are identified, collect required property-owner information and develop a FEMA grant application and BCA to obtain funding to implement acquisition/purchase/moving/elevating residential homes in the flood-prone areas that experience frequent flooding (high risk areas).</p>	Flood, Hurricane/Tropical Storm, Severe Weather, Winter Weather	2, 5	Less than 5 Years	NFIP Floodplain Administrator, supported by homeowners	HMGP and FMA, BRIC, local cost share by residents	Eliminates flood damage to homes and residents.	>\$500,000	High	SIP	SP
2023-City of Meadows Place-011	Flood Study	<p><b>Problem:</b> There is flooding (water ponds on roads) at intersections: W. Airport Blvd at S. Kirkwood Rd. &amp; W. Airport Blvd. at S.W. Freeway which can impact emergency services and access.</p> <p><b>Solution:</b> The City will conduct a flood study at these intersections and will implement the most cost effective measure.</p>	Flood	2	2 Years	FPA, Public Works	BRIC, FMA,	Reduces flooding issues and provides emergency access.	TBD after Study	High	SIP	SP

\*Mitigation initiative is related to a critical facility and/or community lifeline

Notes: Not all acronyms and abbreviations defined below are included in the table.



**Acronyms and Abbreviations:**

CRS	Community Rating System
FEMA	Federal Emergency Management Agency
HMA	Hazard Mitigation Assistance
N/A	Not applicable
NFIP	National Flood Insurance Program

**Potential FEMA HMA Funding Sources:**

FMA	Flood Mitigation Assistance Grant Program
HMGP	Hazard Mitigation Grant Program
BRIC	Building Resilient Infrastructure and Communities Program

**Timeline:**

The time required for completion of the project upon implementation.

**Cost:**

The estimated cost for implementation.

**Benefits:**

A description of the estimated benefits, either quantitative and/or qualitative.

**Mitigation Category:**

- *Local Plans and Regulations (LPR)*—These actions include government authorities, policies, or codes that influence the way land and buildings are being developed and built.
- *Structure and Infrastructure Project (SIP)*—These actions involve modifying existing structures and infrastructure to protect them from a hazard or remove them from a hazard area. This could apply to public or private structures, as well as critical facilities and infrastructure. This type of action also involves projects to construct manmade structures to reduce the impact of hazards.
- *Natural Systems Protection (NSP)*—These are actions that minimize damage and losses, and also preserve or restore the functions of natural systems.
- *Education and Awareness Programs (EAP)*—These are actions to inform and educate citizens, elected officials, and property owners about hazards and potential ways to mitigate them. These actions may also include participation in national programs, such as StormReady and Firewise Communities.

**CRS Category:**

- *Preventative Measures (PR)*—Government, administrative or regulatory actions, or processes that influence the way land and buildings are developed and built. Examples include planning and zoning, floodplain local laws, capital improvement programs, open space preservation, and storm water management regulations.
- *Property Protection (PP)*—These actions include public activities to reduce hazard losses or actions that involve (1) modification of existing buildings or structures to protect them from a hazard or (2) removal of the structures from the hazard area. Examples include acquisition, elevation, relocation, structural retrofits, storm shutters, and shatter-resistant glass.
- *Public Information (PI)*—Actions to inform and educate citizens, elected officials, and property owners about hazards and potential ways to mitigate them. Such actions include outreach projects, real estate disclosure, hazard information centers, and educational programs for school-age children and adults.
- *Natural Resource Protection (NR)*—Actions that minimize hazard loss and also preserve or restore the functions of natural systems. These actions include sediment and erosion control, stream corridor restoration, watershed management, forest and vegetation management, and wetland restoration and preservation.
- *Structural Flood Control Projects (SP)*—Actions that involve the construction of structures to reduce the impact of a hazard. Such structures include dams, setback levees, floodwalls, retaining walls, and safe rooms.
- *Emergency Services (ES)*—Actions that protect people and property during and immediately following a disaster or hazard event. Services include warning systems, emergency response services, and the protection of essential facilities.

The prioritization criteria provided in Volume 1, Section 6 (Mitigation Strategy) identify 14 evaluation/prioritization criteria to complete the prioritization of mitigation initiatives. For each new mitigation action, a numeric rank is assigned (-1, 0, or 1) for each of the 14 evaluation criteria to assist with prioritizing actions as High, Medium, or Low. The table below provides a summary of the prioritization of all proposed mitigation initiatives for the HMP update.





Table 9.7-19. Summary of Prioritization of Actions

Project Number	Project Name	Life Safety	Property Protection	Cost-Effectiveness	Technical	Political	Legal	Fiscal	Environmental	Social	Administrative	Multi-Hazard	Timeline	Agency Champion	Other Community Objectives	Total	High / Medium / Low
2023-City of Meadows Place-001	Backup Generators	1	1	1	1	1	1	0	1	1	1	1	1	1	1	13	High
2023-City of Meadows Place-002	Public Education	1	1	1	1	1	1	1	1	1	1	1	1	1	0	13	High
2023-City of Meadows Place-003	Evacuation Plan	1	0	1	1	1	1	1	1	1	1	1	1	1	0	12	High
2023-City of Meadows Place-004	School Disaster Response Plan	1	0	1	1	1	1	1	1	1	1	1	1	1	1	13	High
2023-City of Meadows Place-005	Human Resources Manual	1	1	1	1	1	1	1	1	1	1	1	1	1	0	13	High
2023-City of Meadows Place-006	Cooling Plan	1	1	1	1	1	1	1	1	1	1	1	1	1	0	13	High
2023-City of Meadows Place-007	Sanding Prioritization Plan	1	1	1	1	1	1	1	1	1	1	0	1	1	0	12	High
2023-City of Meadows Place-008	Police Department Wind Strap for Roof	1	1	1	1	1	1	0	0	1	1	0	1	1	0	10	High
2023-City of Meadows Place-009	Routine Storm Drain Maintenance	1	1	1	1	1	1	1	1	1	1	0	1	1	0	12	High
2023-City of Meadows Place-010	Repetitive Loss Mitigation	1	1	1	1	1	1	0	1	0	0	1	0	1	1	10	High
2023-City of Meadows Place-011	Flood Study	1	1	1	1	1	1	0	1	1	1	0	1	1	1	12	High

Note: Volume 1, Section 6 (Mitigation Strategy) conveys guidance on prioritizing mitigation actions. Low (0-4), Medium (5-8), High (9-14).

